




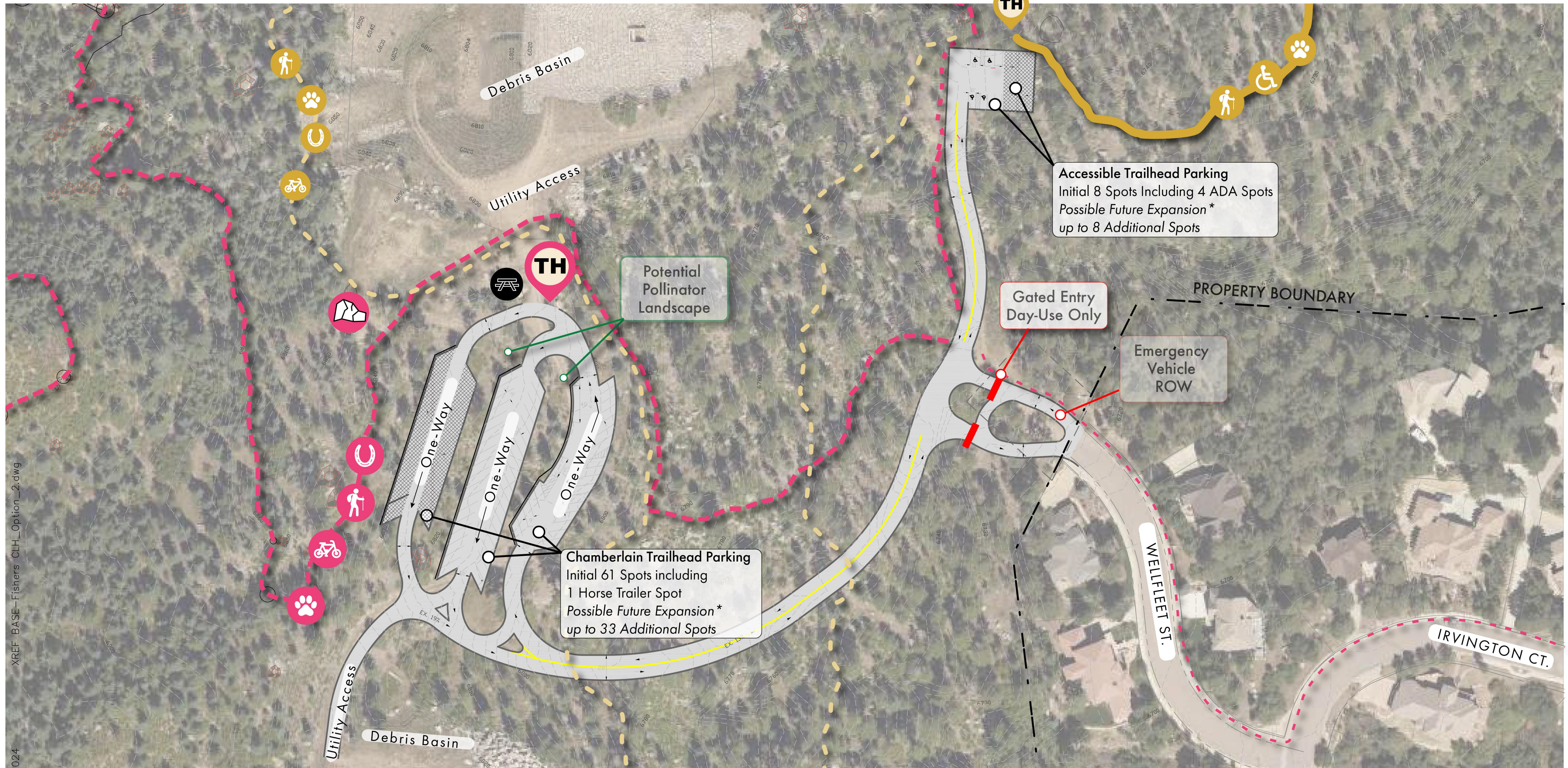
LEGEND

-  Hiking
-  On-Leash Dogs
-  Bouldering Opportunity
-  Biking
-  Horse
-  Proposed Picnicking Area

-  Chamberlain Multi-Use Regional Trail (~4.25 miles)
-  Hiking-Only Paved Accessible Trail (~.55 miles)
-  Soft Surface, Multi-Use Accessible Loop (~1 mile) Accessible (2- 5% slope)

TH Potential Trailhead Plaza
 Permissible Uses:
 Restroom, waste receptacle, signage kiosk,
 Picnic tables and benches.

 Possible Future Parking Expansion*



FISHERS CANYON OPEN SPACE

Trailhead Concept Road and Parking Plan Alt. 2

Adaptive Parking Range: Initial 69 Spots | Possible Future Expansion Up To 110 Spots*

*The Master and Management Plan can identify several conditions or thresholds which will require an additional public process to take place with the public process format to be determined by PRCS leadership.

City of Colorado Springs
 Parks, Recreation & Cultural Services
 Consultant Team: Studio Campo, GEI, Atkins
 November 2024



SCALE: 1"=100'

